

# Questo documento spiega come utilizzare il nuovo svn (code.infn.it) con eclipse e tortoise.

sistema operativo: windows 7

Prerequisiti:

- conoscenza di svn
- conoscenza di eclipse
- conoscenza di putty e pageant

## SVN + ECLIPSE

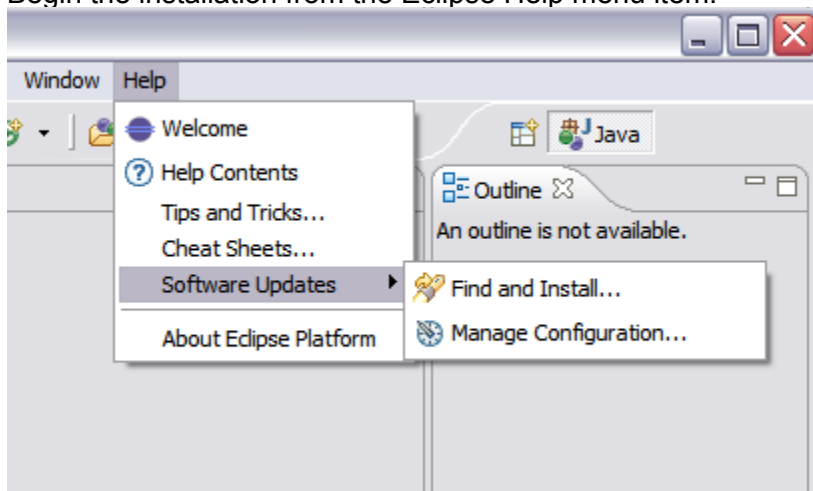
### 1. Installare il plugin subclipse usando le seguenti istruzioni:

( <http://subclipse.tigris.org/servlets/ProjectProcess?pageID=p4wYuA> )

#### Install Subclipse in Eclipse 3.x

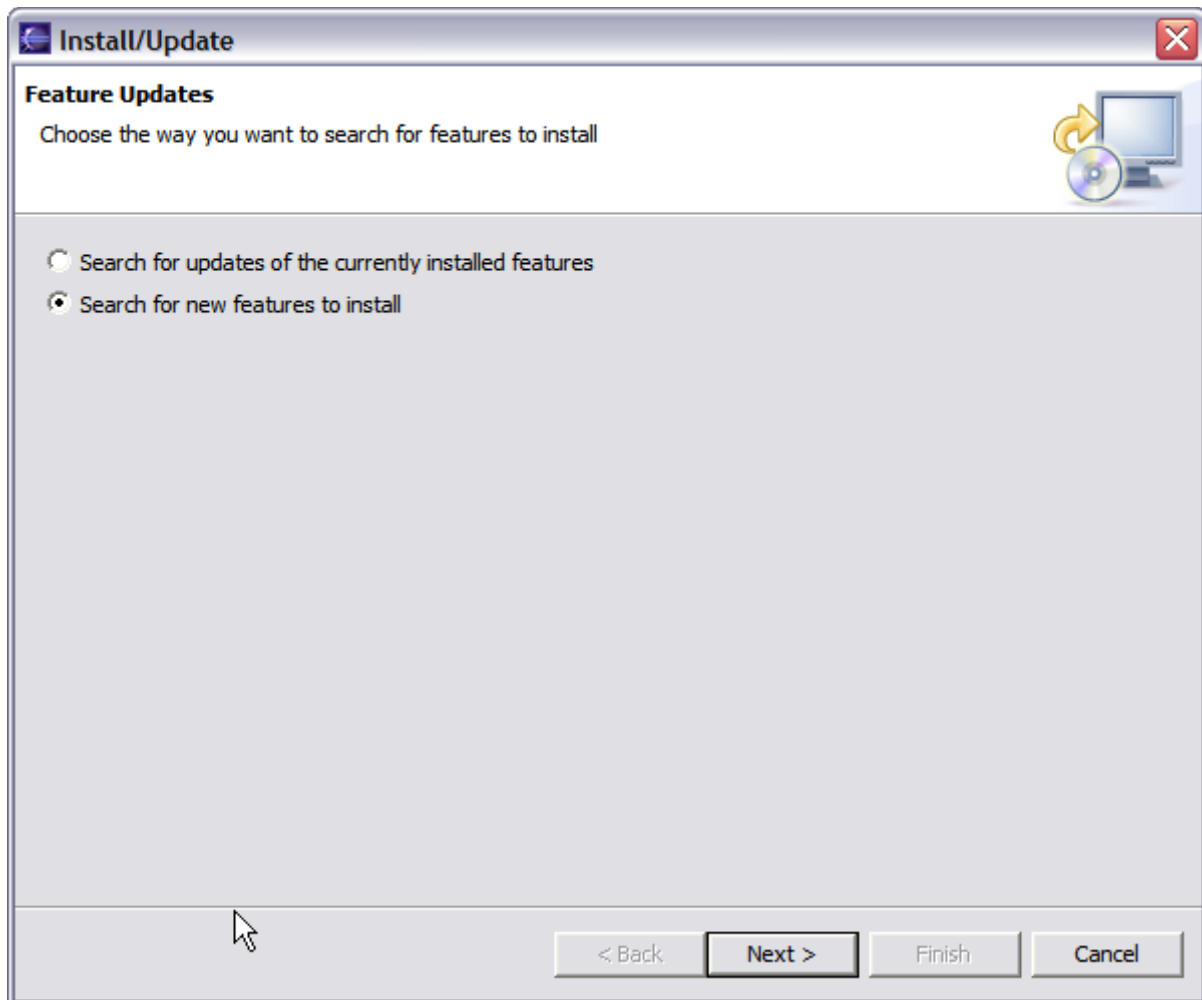
##### Step 1:

Begin the installation from the Eclipse Help menu item.



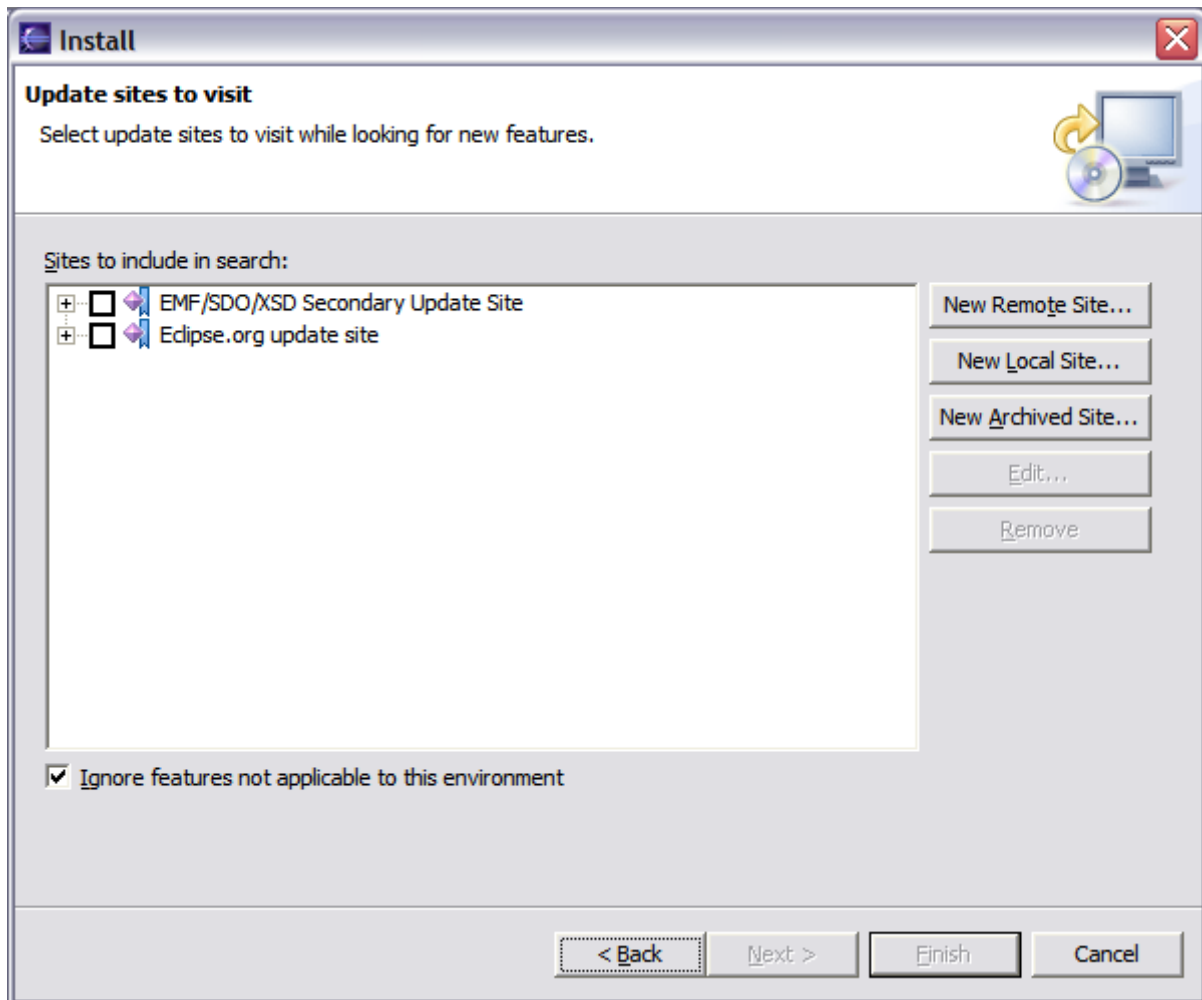
##### Step 2:

This screenshot show the screen as it initially comes up. In this case you will need to change the radio button to indicate that this is a new install.



**Step 3:**

This screen will vary depending on the features you have installed already. You want to click on the New Remote Site button. If you are behind a proxy and the Eclipse install mechanism does not work, then you can download a zipped version of the update site and then click the New Local Site button instead.



**Step 4:**

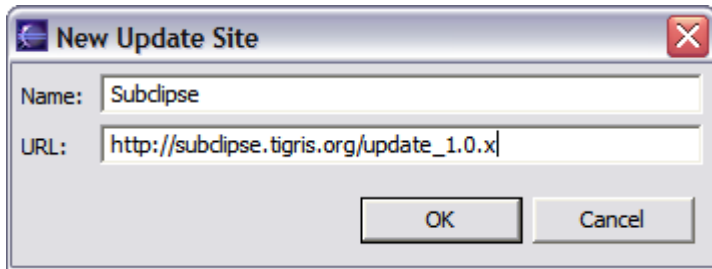
This screen is showing the New Remote Site dialog, filled in with the correct information to install Subclipse

Name: Subclipse 1.6.x (Eclipse 3.2+)  
URL: [http://subclipse.tigris.org/update\\_1.6.x](http://subclipse.tigris.org/update_1.6.x)

Name: Subclipse 1.4.x (Eclipse 3.2+)  
URL: [http://subclipse.tigris.org/update\\_1.4.x](http://subclipse.tigris.org/update_1.4.x)

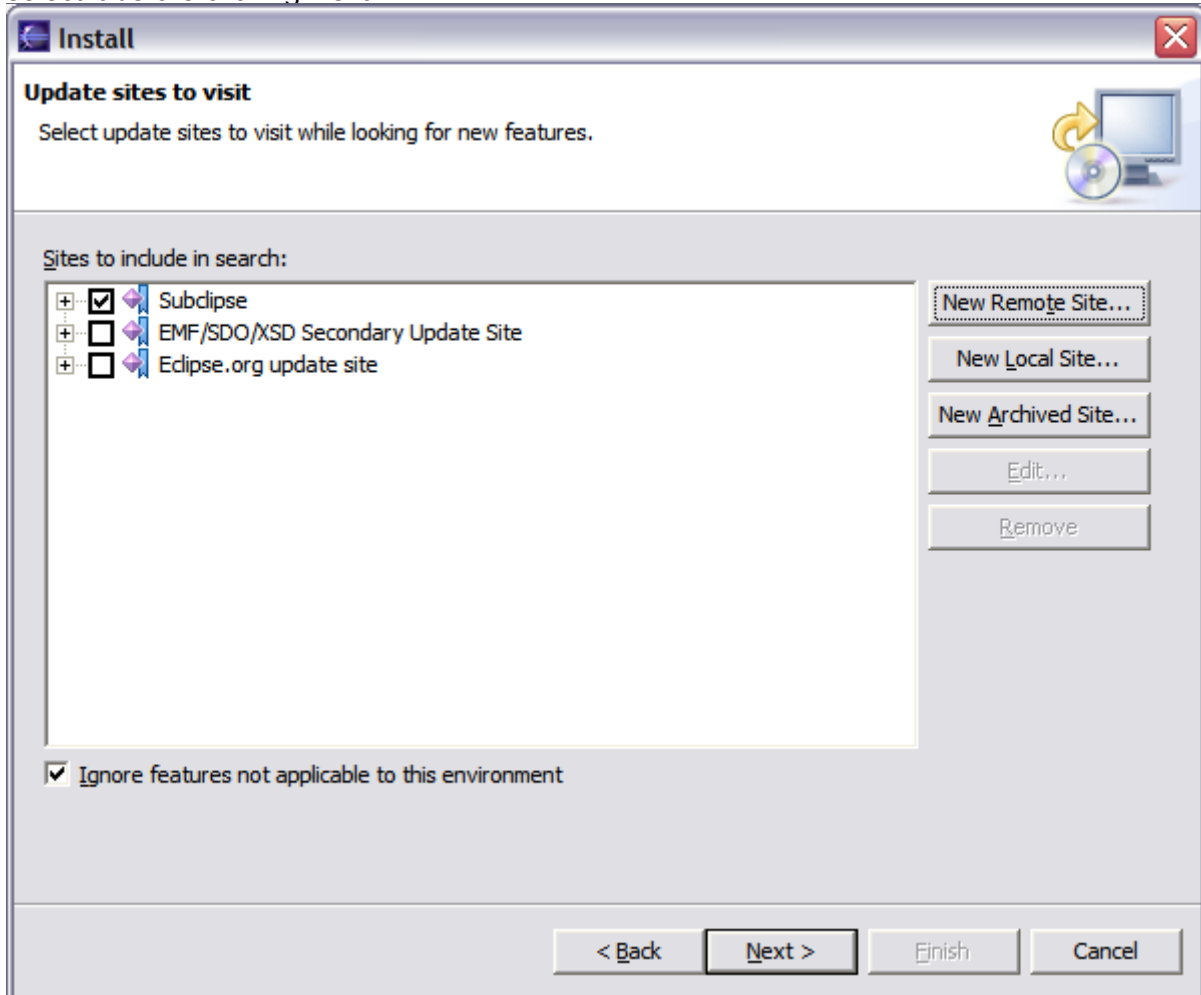
Name: Subclipse 1.2.x (Eclipse 3.2+)  
URL: [http://subclipse.tigris.org/update\\_1.2.x](http://subclipse.tigris.org/update_1.2.x)

Name: Subclipse 1.0.x (Eclipse 3.0/3.1)  
URL: [http://subclipse.tigris.org/update\\_1.0.x](http://subclipse.tigris.org/update_1.0.x)



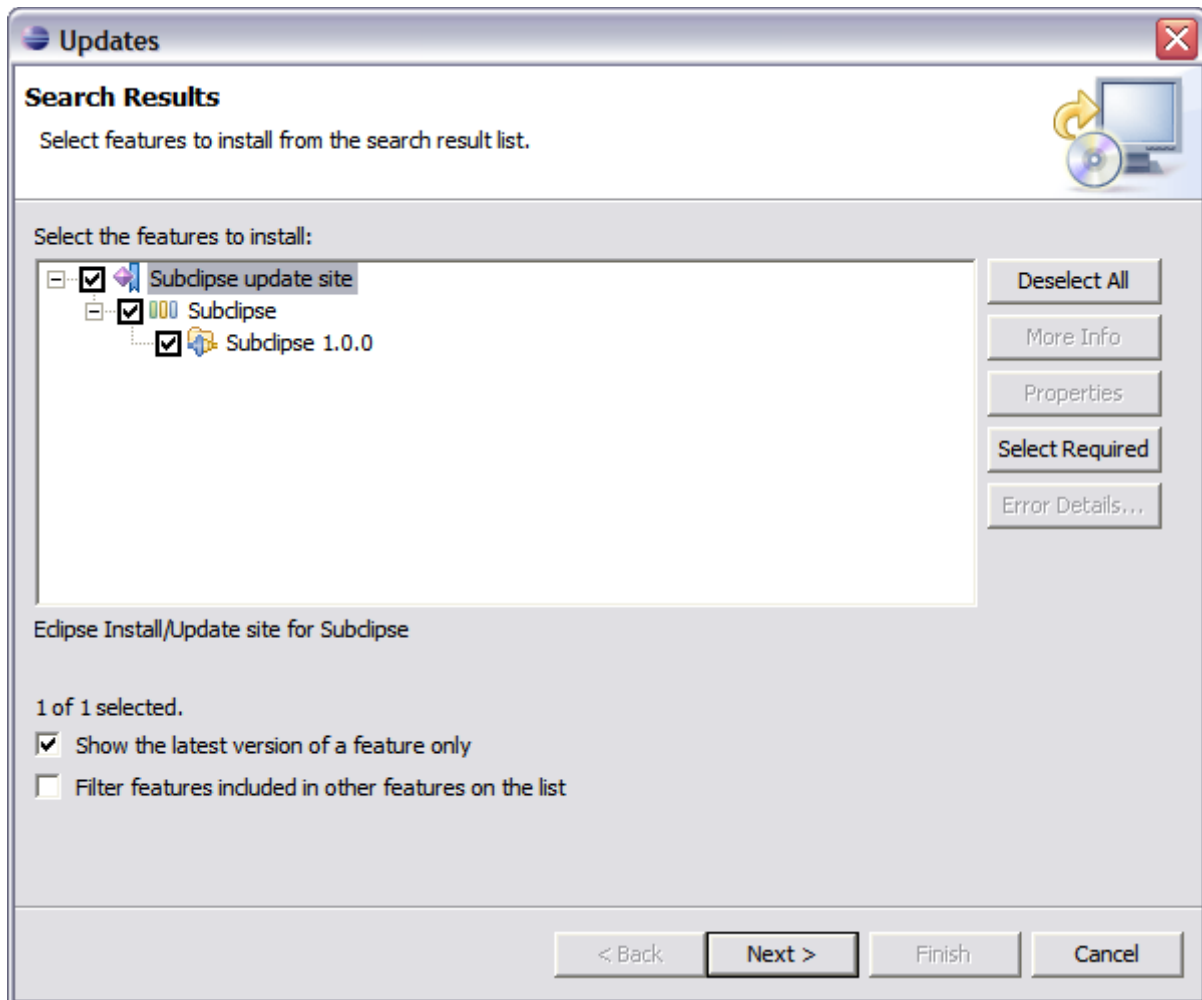
**Step 5:**

When you first come back to this screen, the site you added will NOT be selected. Be sure to select it before clicking Next.

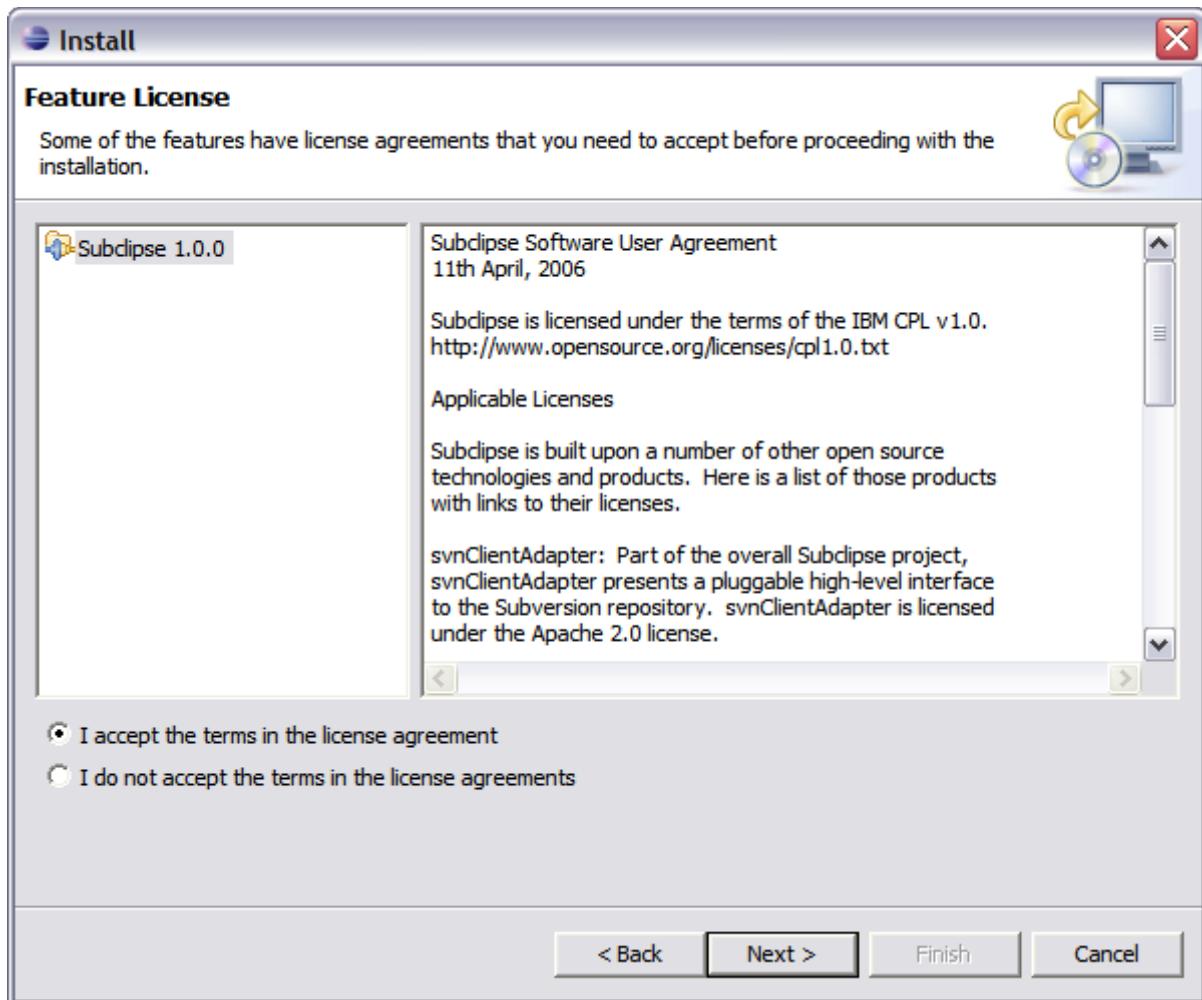


**Step 6:**

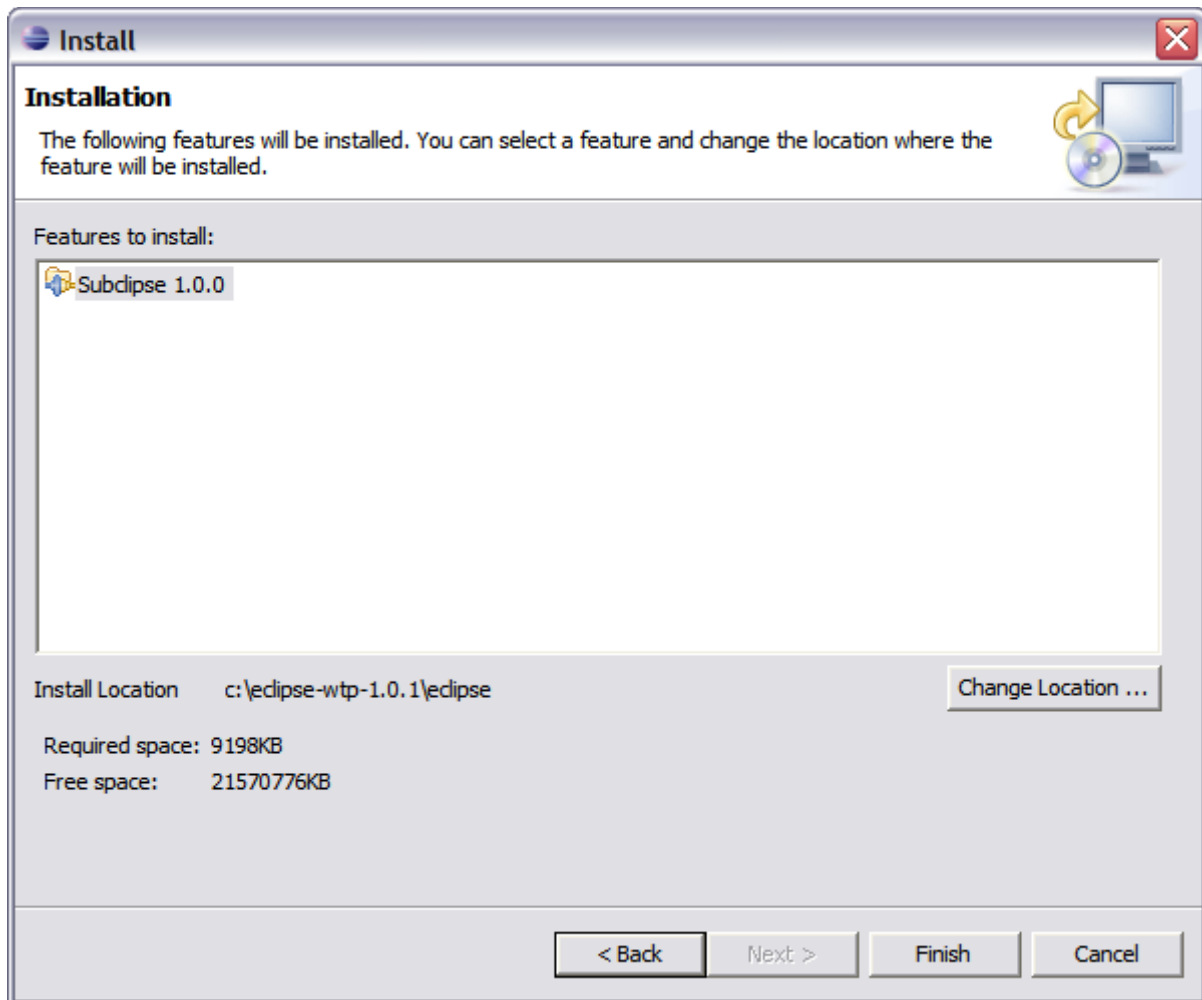
This next screen shows all of the features that are available to install.



**Step 7:**  
Click the button to accept the license agreement.

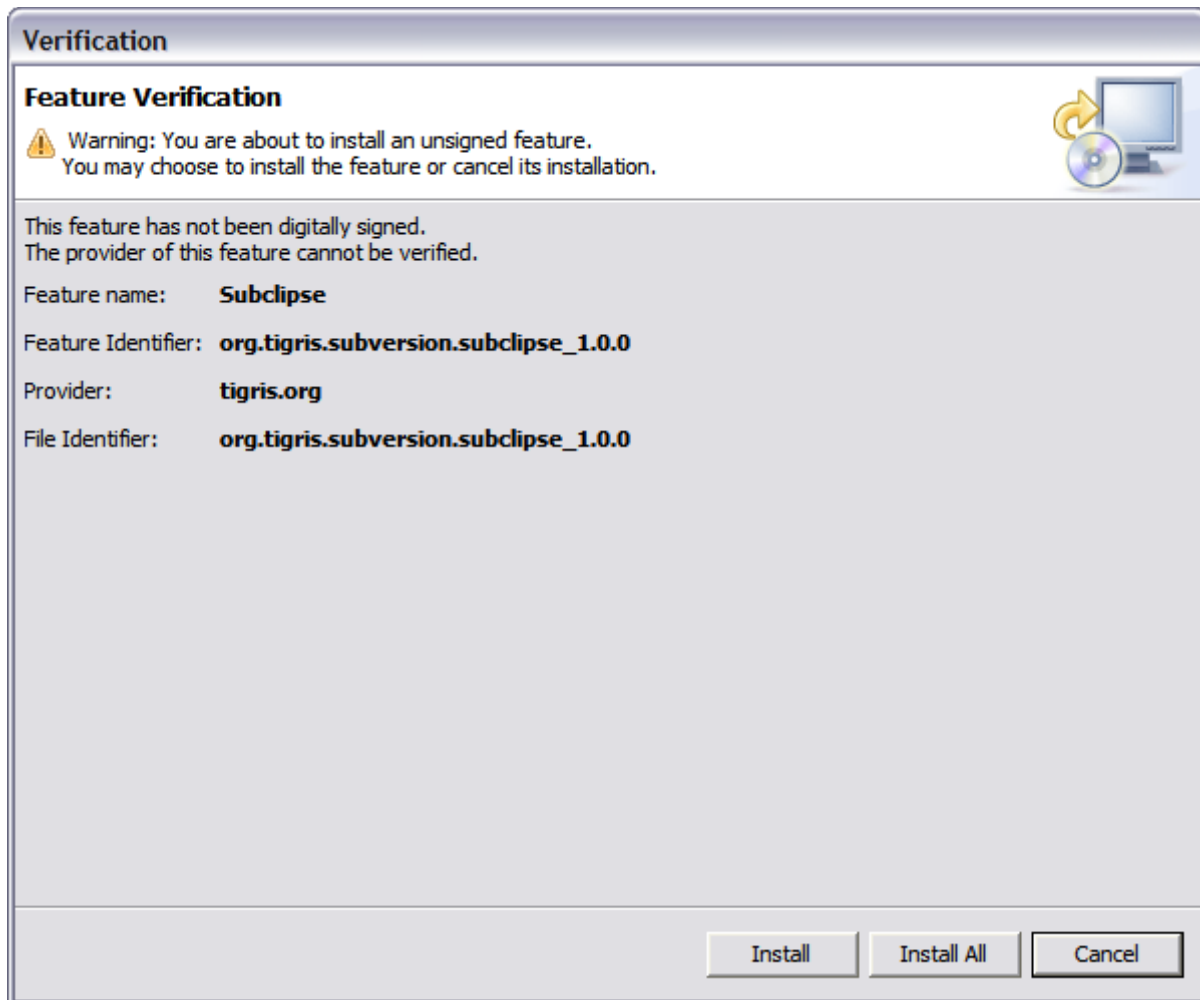


**Step 8:**  
Confirm the install location

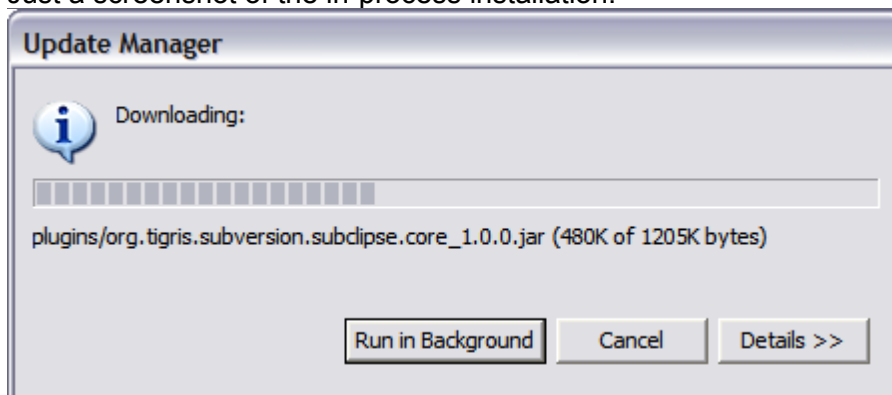


**Step 9:**

There is an Eclipse preference to turn off this next dialog. I have never seen a signed feature. Not even Eclipse.org nor IBM sign their features.

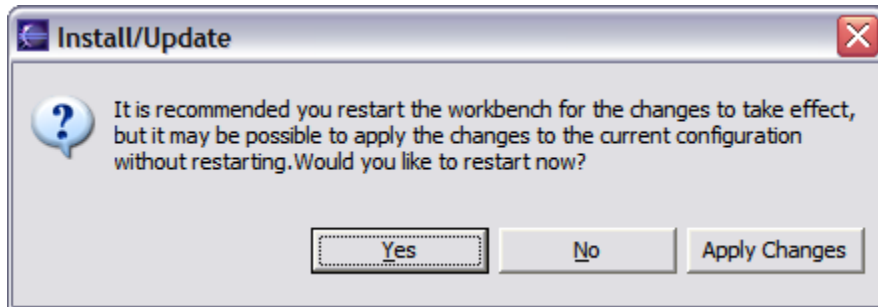


**Step 10:**  
Just a screenshot of the in-process installation.



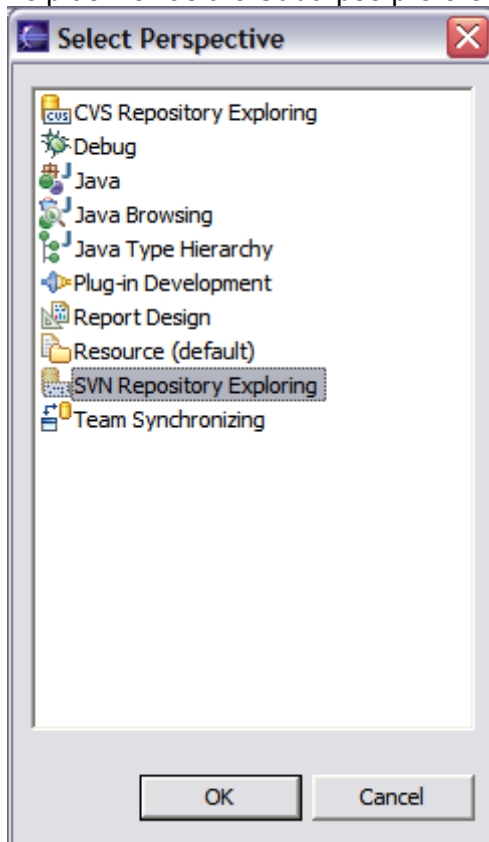
**Step 11:**  
Eclipse needs to be restarted after installing Subclipse.





**Step 12:**

Finally, after restarting Eclipse, the first thing you will typically want to do is open the Subclipse Repository perspective where you can define your repositories. Be sure to also check the online help as well as the Subclipse preferences located under Team -> SVN.



**2. Andare in window → preferences e selezionare JavaHL**

type filter text

- ▷ General
- ▷ Ant
- ▷ Data Management
- ▷ Help
- ▷ Install/Update
- ▷ Java
- ▷ Java EE
- ▷ Java Persistence
- ▷ JavaScript
- ▷ Mylyn
- ▷ Plug-in Development
- ▷ Remote Systems
- ▷ Run/Debug
- ▷ Server
- ▲ Team
  - ▷ CVS
  - File Content
  - Ignored Resources
  - Models
  - ▲ SVN
    - Comment Template
    - Console
    - ▷ Diff/Merge
    - Label Decorations
    - Menu Icons
    - Usage Reporting
- Terminal
- Validation
- ▷ Web
- ▷ Web Services
- ▷ XML

## SVN

### General SVN settings:

- Show revision comparisons in a dialog
- Remove unversioned resource on replace
- Fetch affected paths on demand
- Show tags in remote history view
- Show out of date folders
- JavaHL: Commit across multiple projects atomically
- Automatically share nested projects
- Show warning message before committing to tag path

Default number of log messages (0=Get All)

Use Quick Diff annotate mode for local file annotations

Yes  No  Prompt

Commit resources with errors

Yes  No  Prompt

Commit resources with warnings

Yes  No  Prompt

SVN interface:

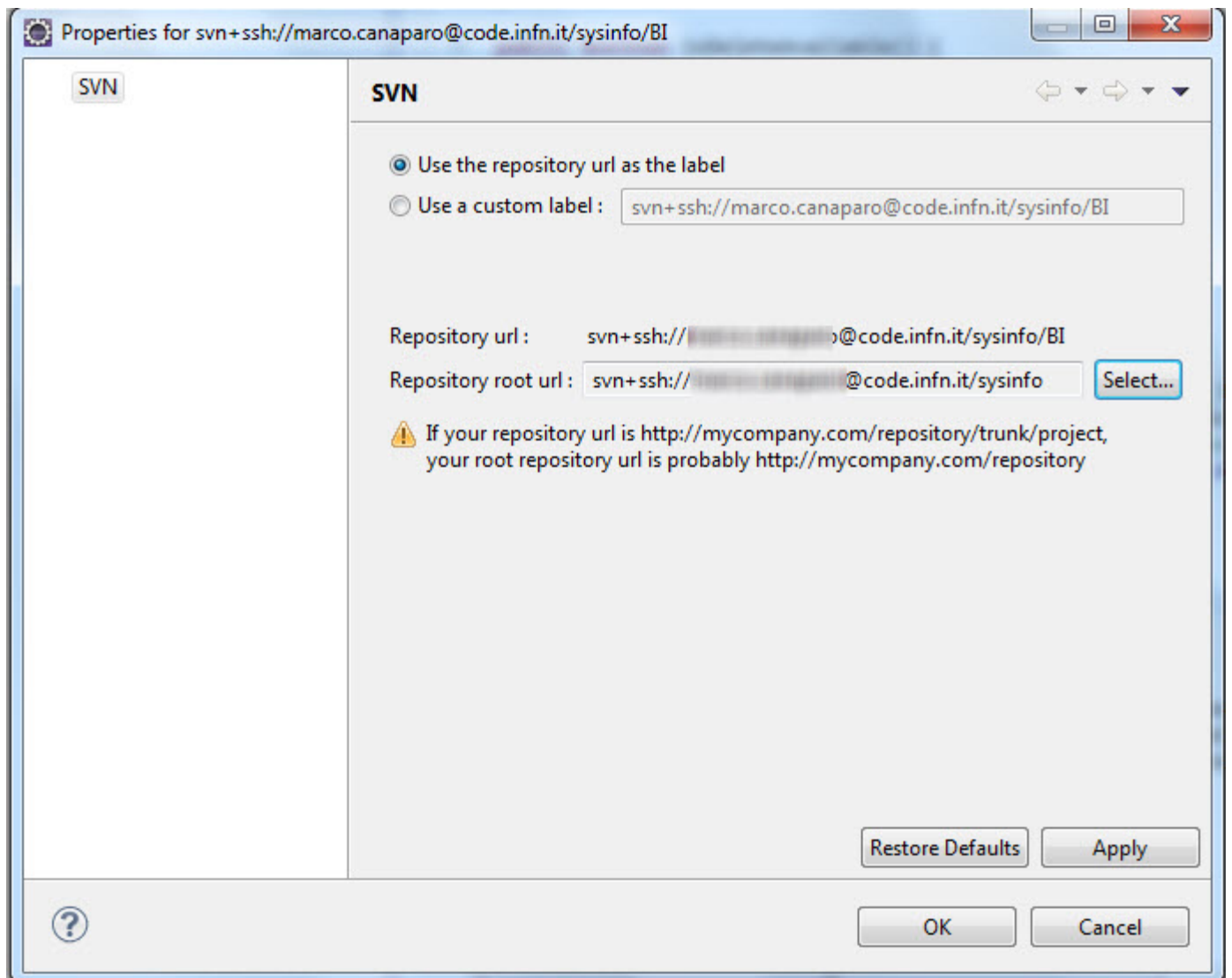
Client:

Configuration location :

Use default config location

Use directory :

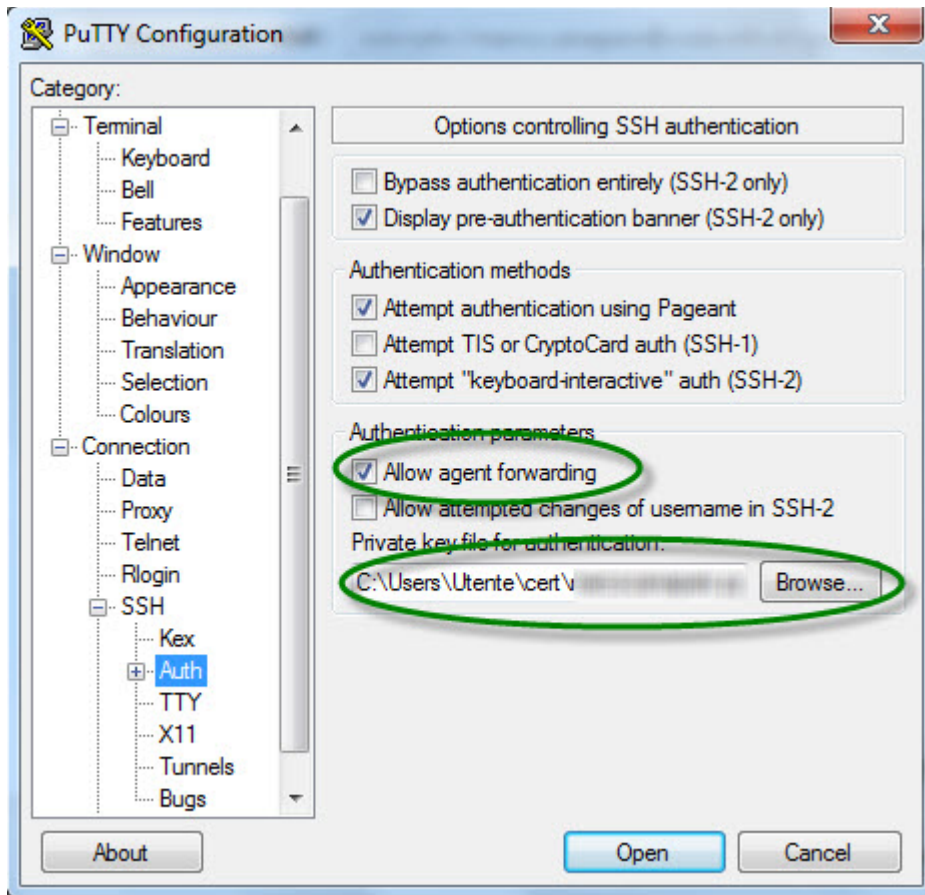
### 3. Inserire un nuovo repository con le caratteristiche indicate sotto



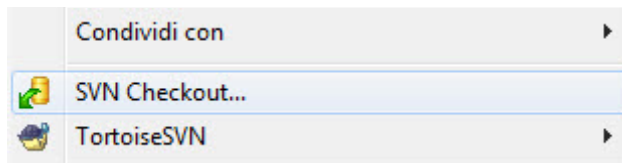
## SVN + TORTOISE

Installare pageant e inserire la propria chiave privata.

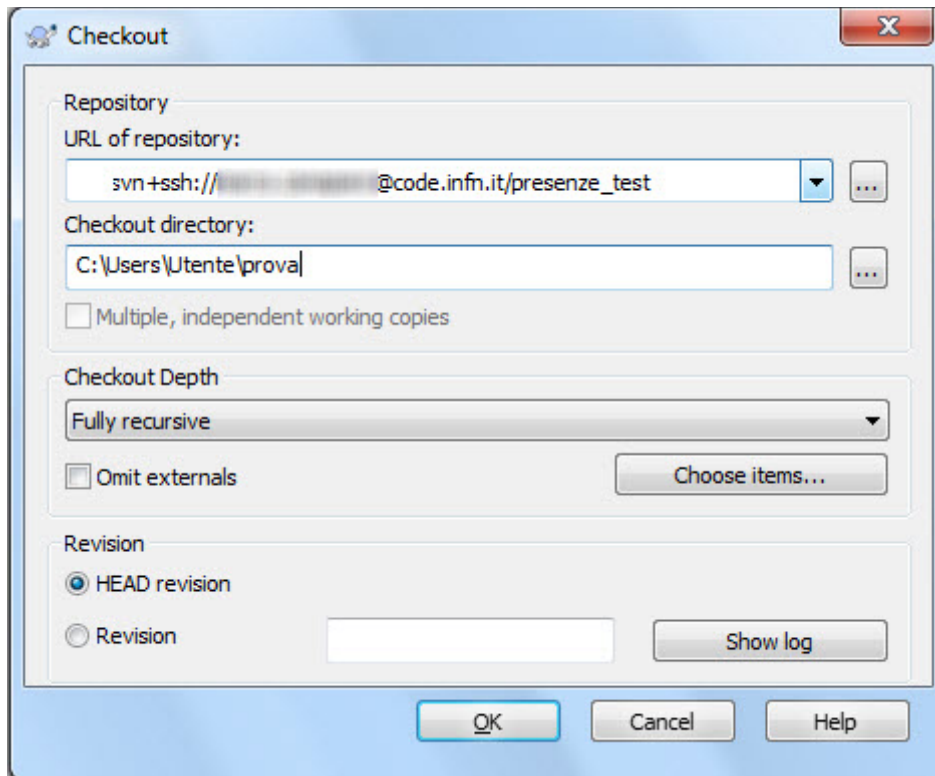
Sotto putty mettere per code.infn.it l'accesso tramite chiave privata e con il forward dell'agent



Una volta installato tortoise, andare su una qualunque cartella vuota e cliccare con il tasto destro scegliere, ad esempio la voce SVN checkout.



Inserire le seguenti informazioni nella form



## Importante:

In caso del seguente errore:

**svn: Can't create tunnel: Impossibile trovare il file specificato**

seguire le indicazioni seguenti:

[ riferimento: <http://ligio.altervista.org/informatica/collegarsi-a-un-server-svn.html> ]

Nel seguente path

C:\Users\Utente\AppData\Roaming\Subversion

modificare il file config con la seguente direttiva:

```
ssh = C:\\Program Files\\TortoiseSVN\\bin\\TortoisePlink.exe
```

NOTA: per accedere al file di configurazione potete anche fare così:

```
destro sulla cartella vuota->TortoiseSVN-->Settings->General----> Subversion  
configuration file: edit ---> trovata la sez [Tunnels] aggiungete  
"ssh = c:/Program Files/TortoiseSVN/bin/TortoisePlink.exe -l -pw"
```

PS: il path indicato potrebbe cambiare..mettete il path del vostro eseguibile di TortoisePlink.exe

poi nella sezione "Network", in SSH client inserite il path utilizzato prima...es: "C:\Program Files\TortoiseSVN\bin\TortoisePlink.exe"